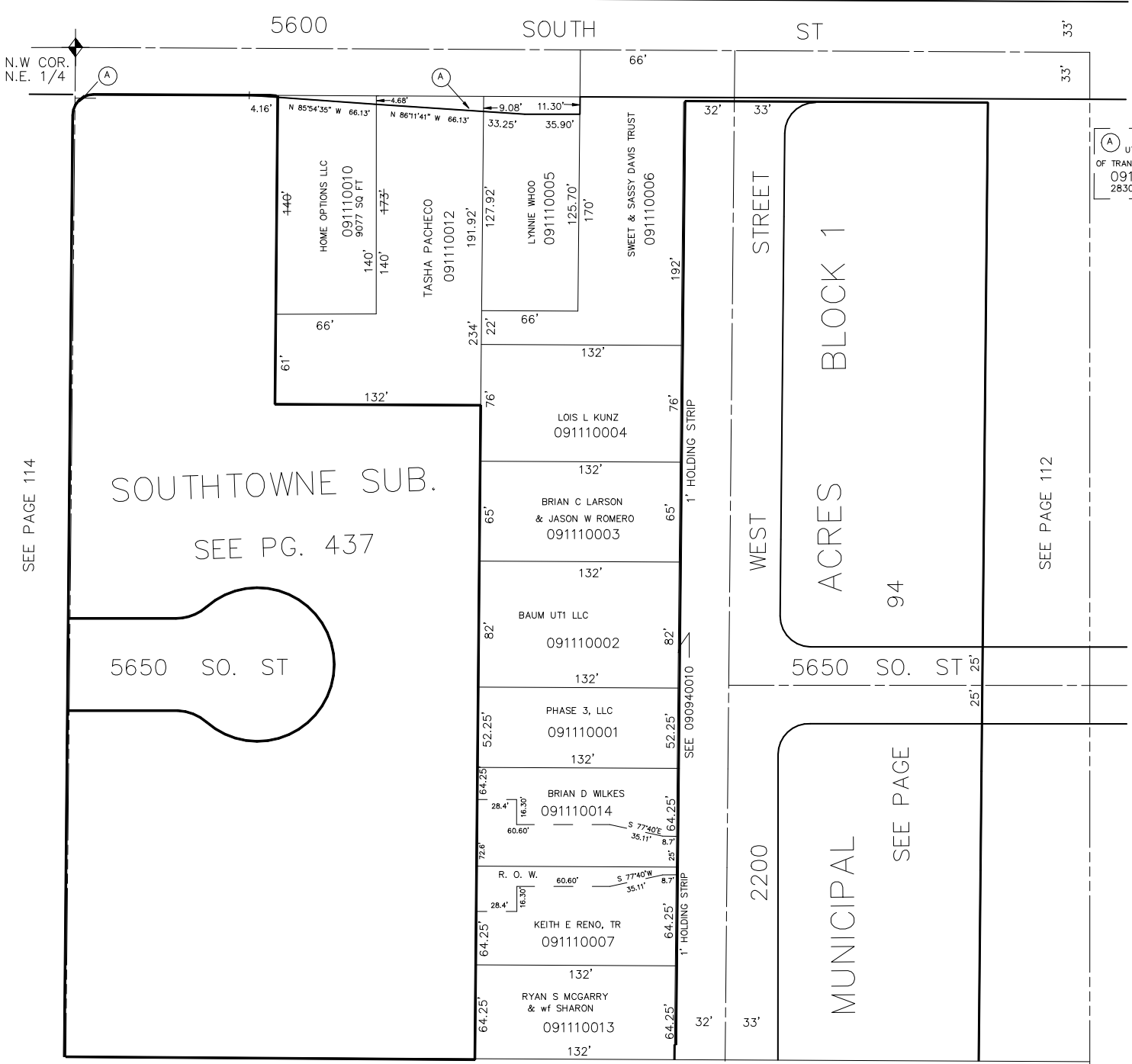


PART OF THE N.W. 1/4 OF N.W. 1/4 OF N.E. 1/4 OF SECTION 23, T.5N., R.2W., S.L.B. & M.

IN ROY CITY  
SCALE 1' = 50'

TAXING UNIT: 41

SEE PAGE 1



UTAH DEPT  
OF TRANSPORTATION  
091110015  
2830 SQ FT

SEE PAGE 114

SOUTHTOWNE SUB.  
SEE PG. 437

SEE PAGE 112

5650 SO. ST

WEST STREET  
ACRES  
BLOCK 1  
94

2200 WEST STREET  
MUNICIPAL  
SEE PAGE

SEE PAGE 93